



CUSTOM MADE STANDARD ROLL FORM ALUMINUM WINDOW SCREEN ORDER FORM

Account# _____

Page# ____ of ____

Sold To: _____

Ship To: _____

Salesman _____ Supervisor _____ Purchase Order# _____

Date _____ Quoted By _____ Customer's Name _____

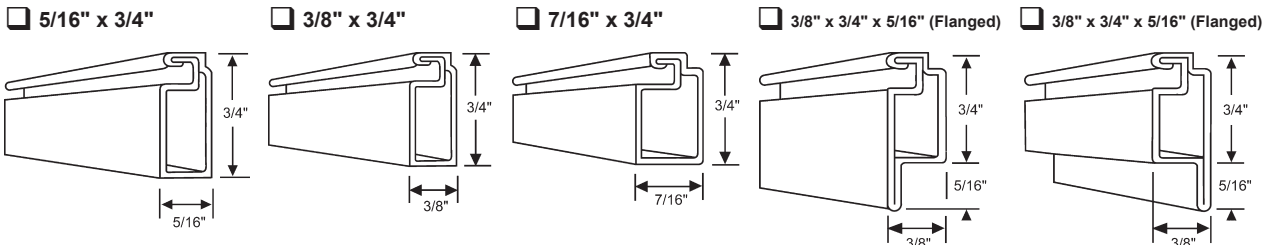
STEP 1 Select configuration number needed from corresponding pages. _____

STEP 2 Measurement
 _____" Width x _____" Height
 Note: On all screen frames screen measurements must be box to box.
 Note: Minimum screen size must be over 13" x 13".
 Maximum screen size is 60" x 110".

STEP 4 Select wire.
 Charcoal Fiberglass (Standard) _____
 Pet Screen _____ Solar Screen _____
 Better View _____ Ultra View _____
 Aluminum _____ Tuff Screen _____

STEP 5 Select frame finish.
 White _____ Clay _____ Black _____
 Bronze _____ Almond _____

STEP 3 Identify frame size.



- Minimum order: 20 assorted assembled screens per order.
- The configurations shown are the only ones available to make. No exceptions.
- All window screens are custom made to order and are not returnable and non-cancelable.
- Packing charges apply on all orders and varies depending on the quantities and sizes ordered.

Part#	Quantity	Size	Price Each	Amount
990-999		" width X " height		
890-999-1		Window Screen Packaging Charge (For every 60 screens)	\$28.26	
			TOTAL	
			FREIGHT	

STEP 6 All Custom made window screen orders will not be processed without customer's signature verifying acceptance of our terms and conditions of order.

I understand that this material is not regular stock, but custom made to specifications as stated above. I understand and accept the condition that this material is NON-RETURNABLE and NON-CANCELABLE. IT IS THE RESPONSIBILITY OF THE CUSTOMER TO INSPECT FOR DAMAGE, AND MAKE THE CLAIM WITH THE CARRIER, AS WE ARE NOT RESPONSIBLE FOR DAMAGE.

Please Note: For all truck deliveries there is a minimum floor charge. There is an additional charge for residential deliveries.

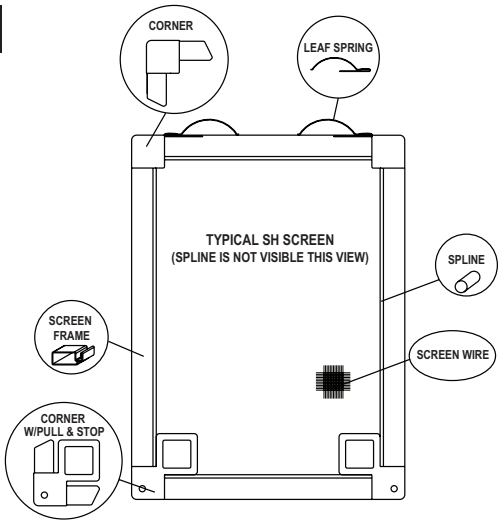
Signature of Authorized Buyer _____ Buyer Phone _____ - _____

Title _____

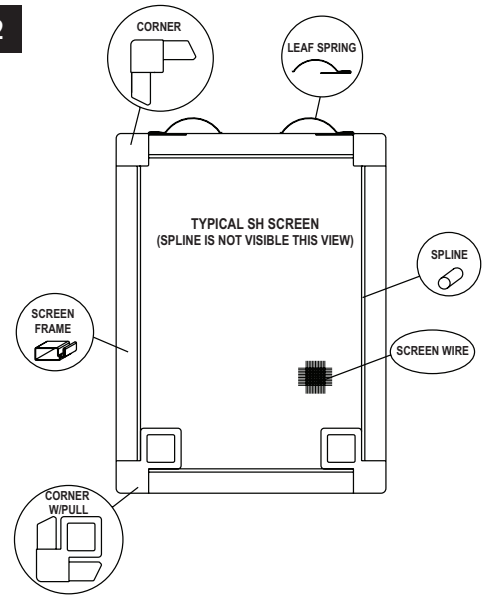
FAX THIS COMPLETED FORM TO: 610-534-3202

CUSTOM MADE STANDARD ROLL FORM ALUMINUM WINDOW SCREEN CONFIGURATIONS

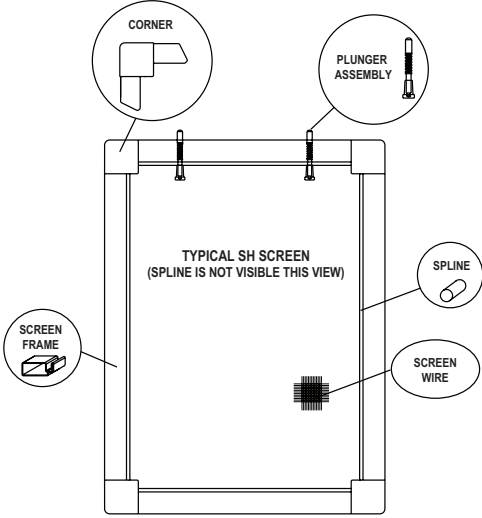
RFSH1



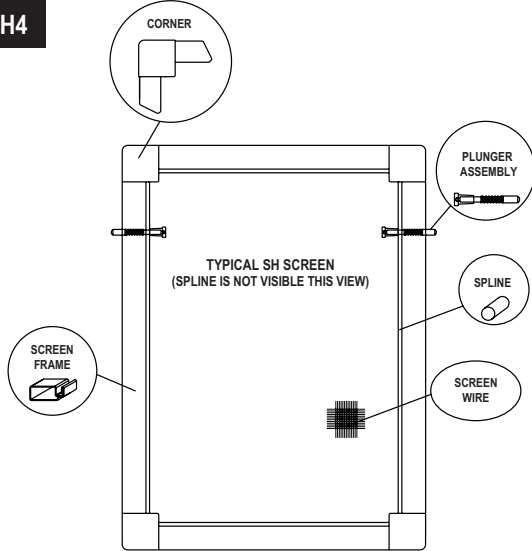
RFSH2



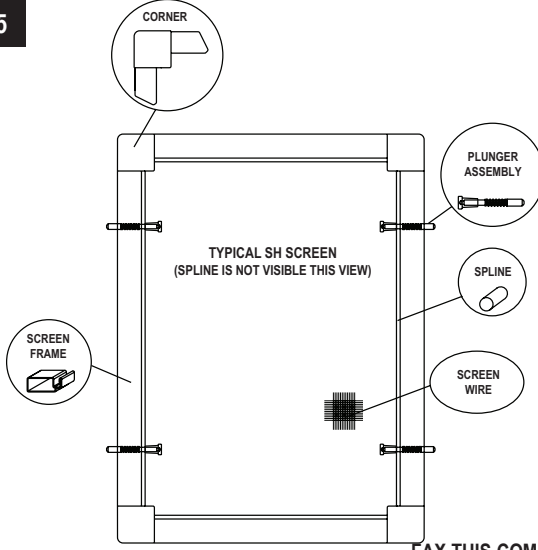
RFSH3



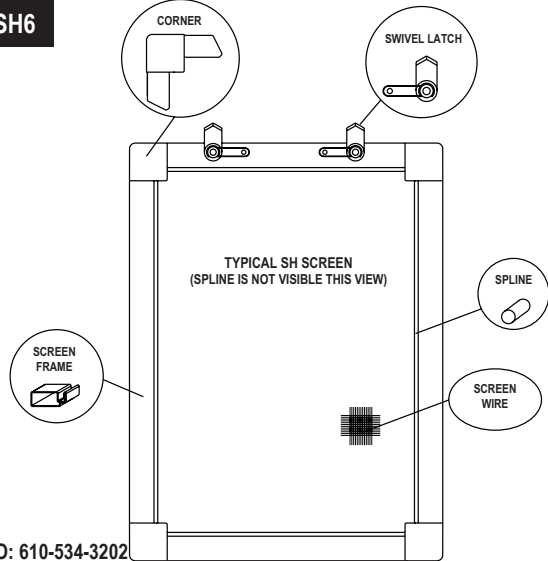
RFSH4



RFSH5



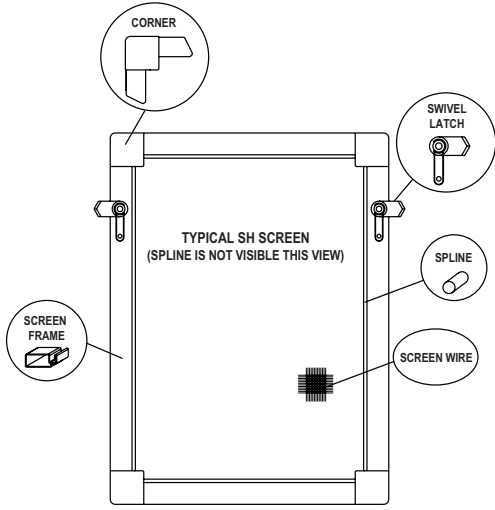
RFSH6



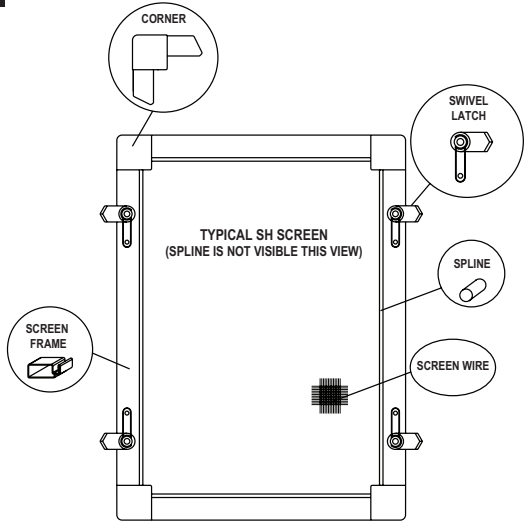
FAX THIS COMPLETED FORM TO: 610-534-3202

CUSTOM MADE STANDARD ROLL FORM ALUMINUM WINDOW SCREEN CONFIGURATIONS

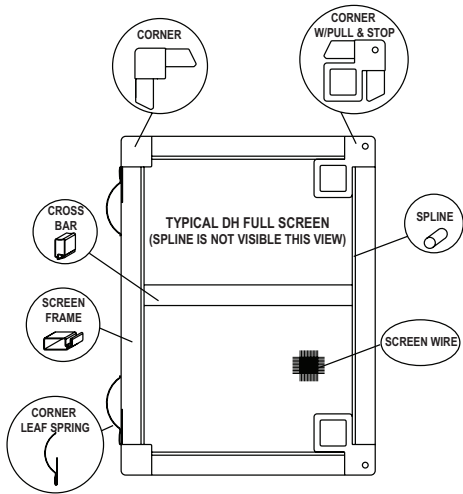
RFSH7



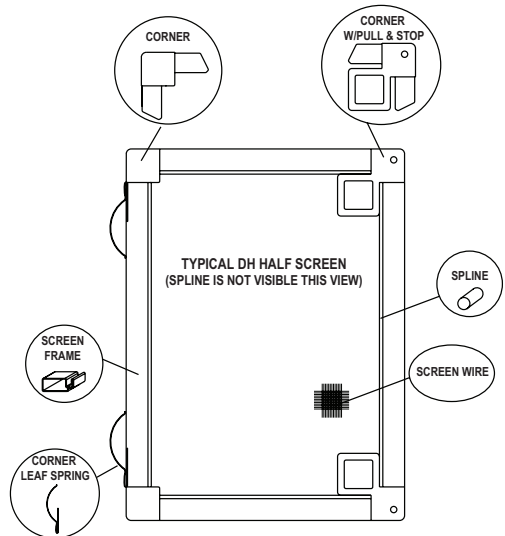
RFSH8



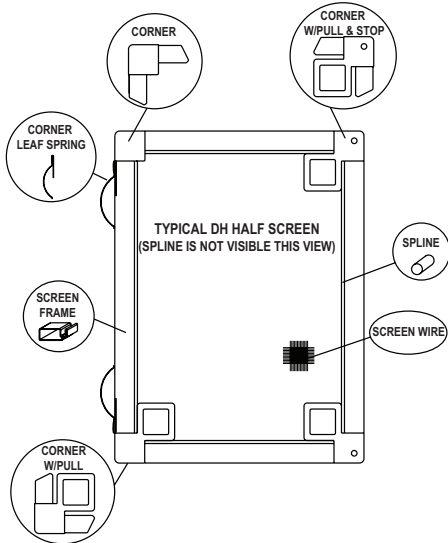
RFDH1



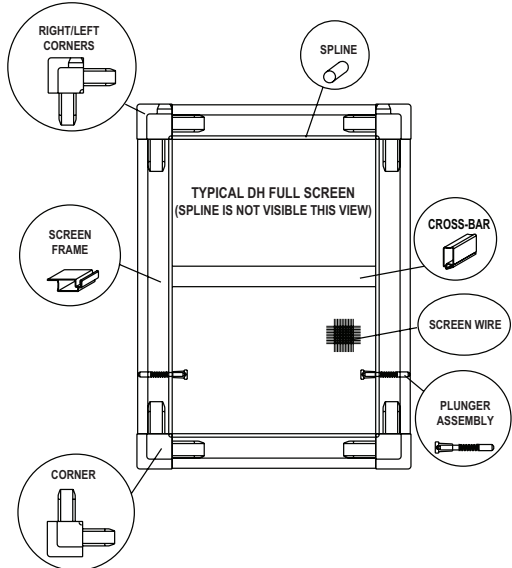
RFDH2



RFDH3



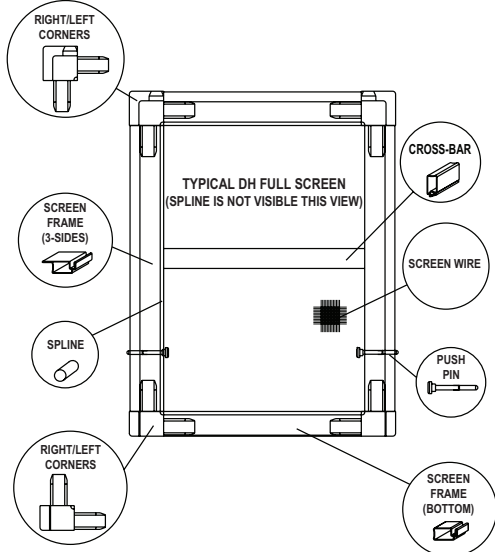
RFDH4



FAX THIS COMPLETED FORM TO: 610-534-3202

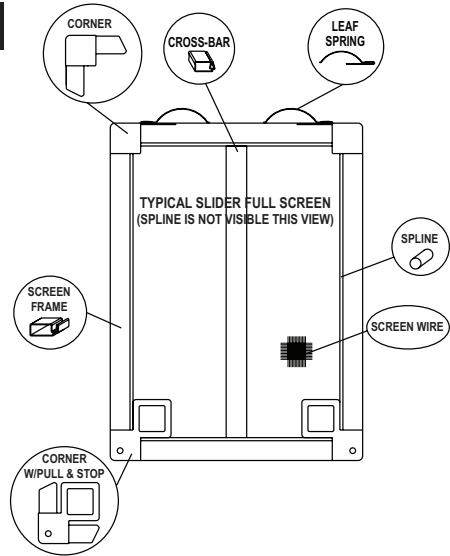
CUSTOM MADE STANDARD ROLL FORM ALUMINUM WINDOW SCREEN CONFIGURATIONS

RFDH5

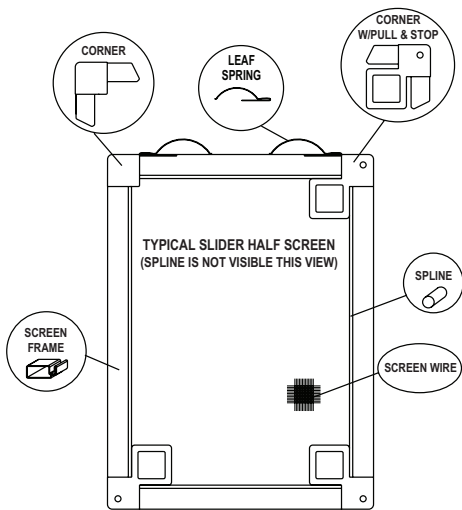


Note: RFDH5 uses two screen frames. One for the bottom and 3 flanged frames for the remaining sides.

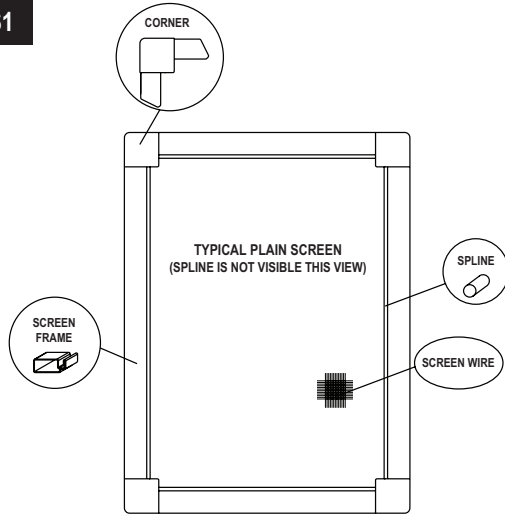
RFSL1



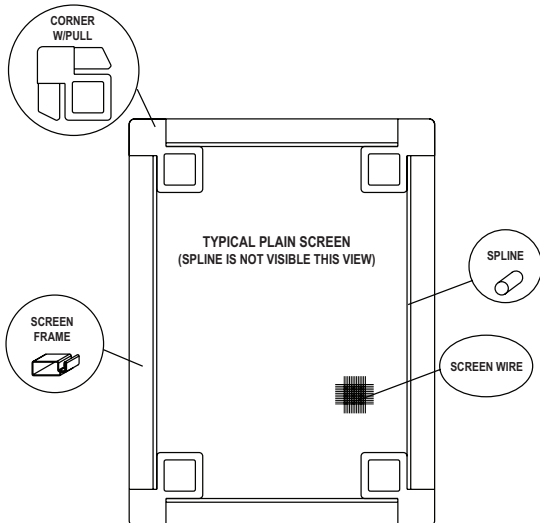
RFSL2



RFFS1

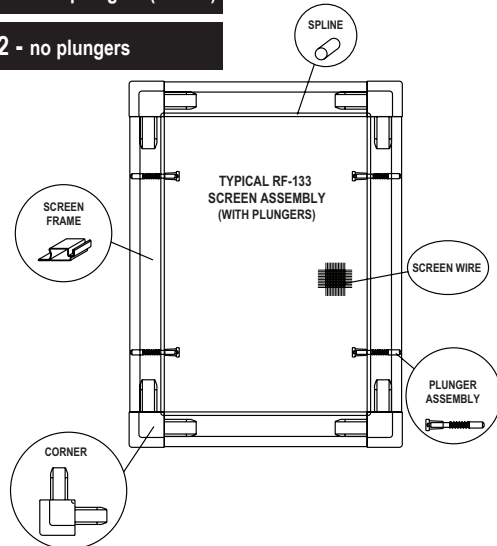


RFFS2



RFCA1 - with plungers (shown)

RFCA2 - no plungers



FAX THIS COMPLETED FORM TO: 610-534-3202



DAMAGED WINDOW/PATIO DOOR SCREENS DELIVERY

TRUCK SHIPMENT:

You must check the boxes thoroughly BEFORE you sign and follow the procedures below.

If there is visible damage to the entire shipment, you should refuse it.

If there is partial damage, you should sign the BOL (Bill of Lading) as 1 of 5 boxes damaged, 2 of 5 boxes damaged, etc. Then notify us immediately and save the box and materials. We will start the claim process. Take pictures of the damaged box(s) and send that to us so we can submit with the claim paperwork.

If there is concealed damage and you signed for it "clear", it becomes more of a problem area. Notify us immediately. We can initiate the claim BUT there is a good chance it won't be approved. Take pictures of the screens damaged inside, and save the box and materials.

SMALL PARCEL (UPS & FEDEX):

Follow the same procedures as TRUCK SHIPMENT above.

If concealed damage, we will have the carrier do a "driver follow-up" to review the saved box and materials.

If it is left at the door unsigned and then you see damage(s) to it, you must notify us immediately. Save the box and materials. We will initiate the claim process by having the carrier do a "driver follow-up" to review the saved box and materials.